



## MD10D-Kit



---

# Installation Guide

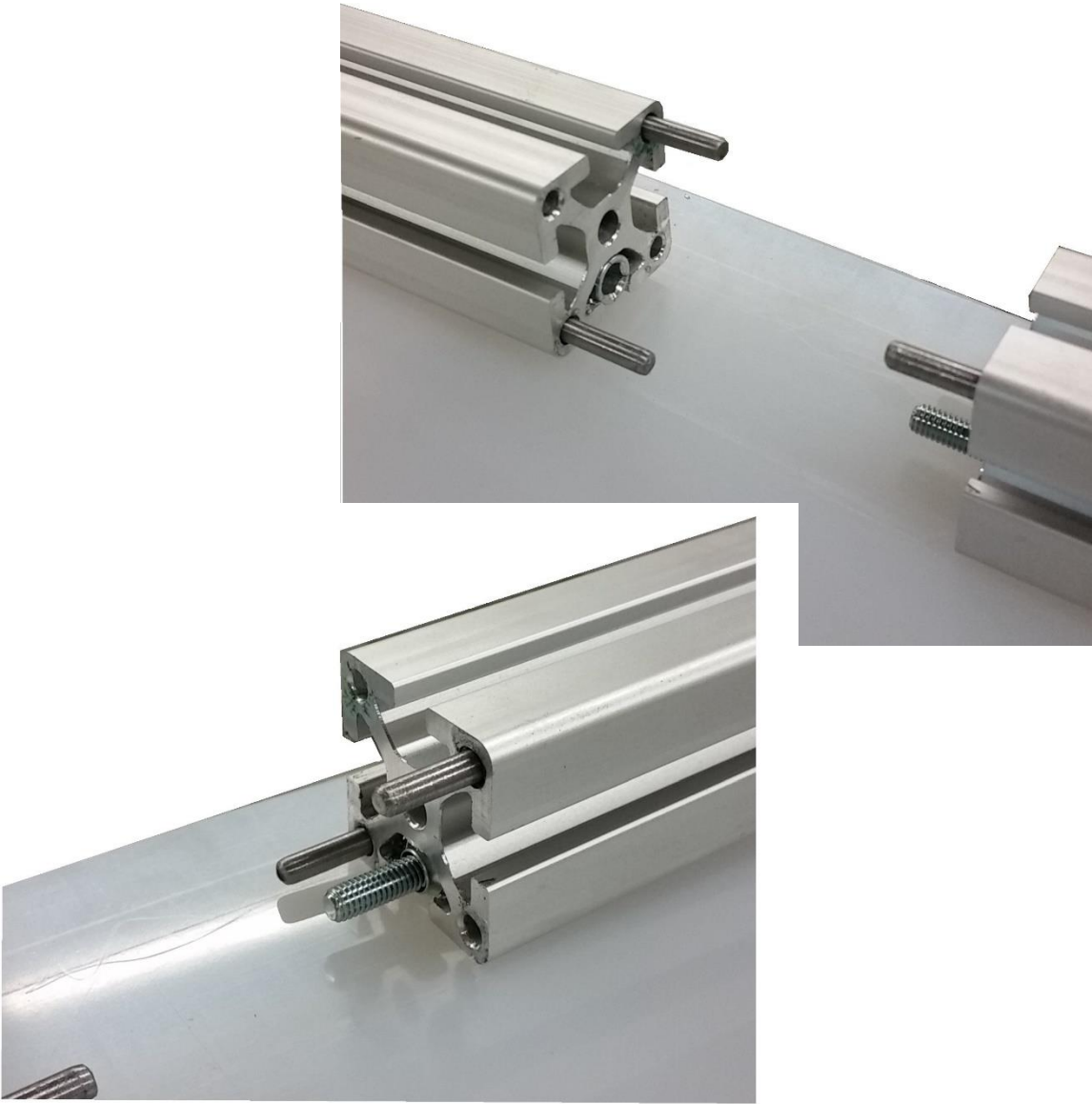
---

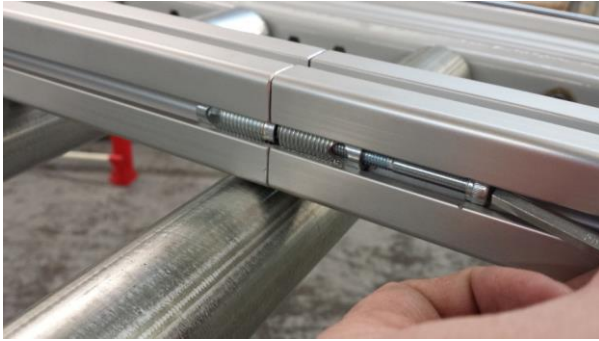
Hymark Ltd. – 427 Bark Cove – Owensboro, KY 42303  
(270) 683-3500 – Fax (270) 683-2500  
[www.kentuckygauge.com](http://www.kentuckygauge.com)

**First, slide the carriage off the rail and remove the M8 bolt in the bumper stop.**



**Align the pins in the extrusion holes to align the rail for splicing. This will help keep the extrusion from pivoting around the central butt splice point.**





**Slide the bolt toward the butt splice hardware and begin threading it into the opposing butt splice.**



**Continue tightening the bolt until the butt splice is tight. Make sure the extrusion sections are aligned as you tighten the butt splice.**



**It is important that the rail is mounted to a flat surface to ensure the rail sections remain square. This will allow the carriage to move freely over the splice.**

**Reinstall the carriage on the rail and ensure that it travels over the splice without issues. If there are any issues, loosen the butt splice and readjust the rail to ensure it is square and the T-slots are aligned.**



**Do not install the scale until the splice is adjusted and the rail is final mounted. The scale can not be removed to adjust the splice later. If the rail is not final mounted to fully support the splice, issues could arise from the scale shifting, if the splice is allowed to flex.**



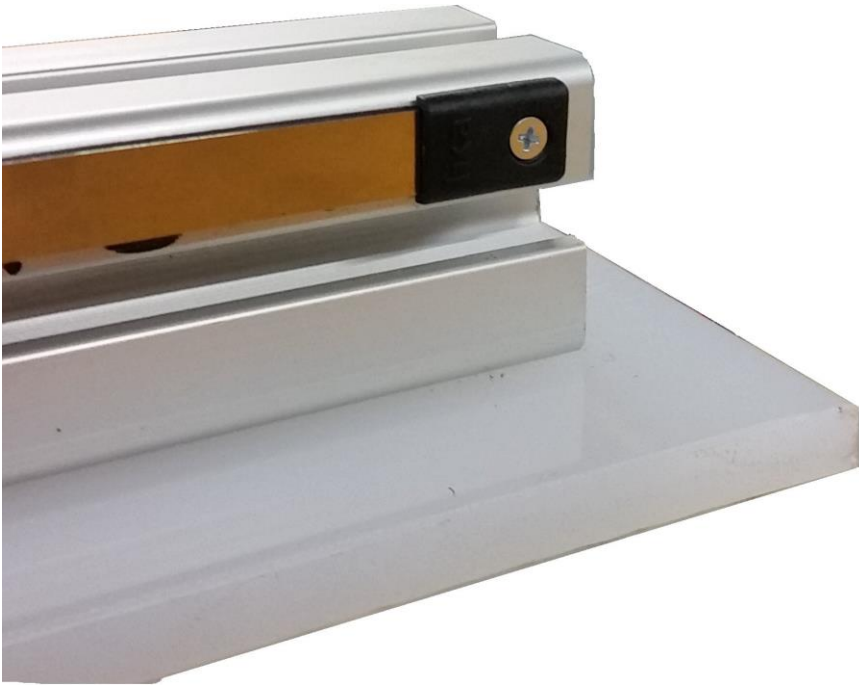


**The rail is marked to indicate the location on the rail that the scale is to be installed. (Note: The scale and steel cover strip are not directional). Use the included UHMW guide to ensure the scale is installed straight and in the correct location.**



**Clean the rail with acetone or isopropyl alcohol to remove any residual oil and debris. Now, begin to remove the adhesive backing from the scale and press it firmly against the rail. Rest the scale against the guide and work your way down the rail, installing the scale.**

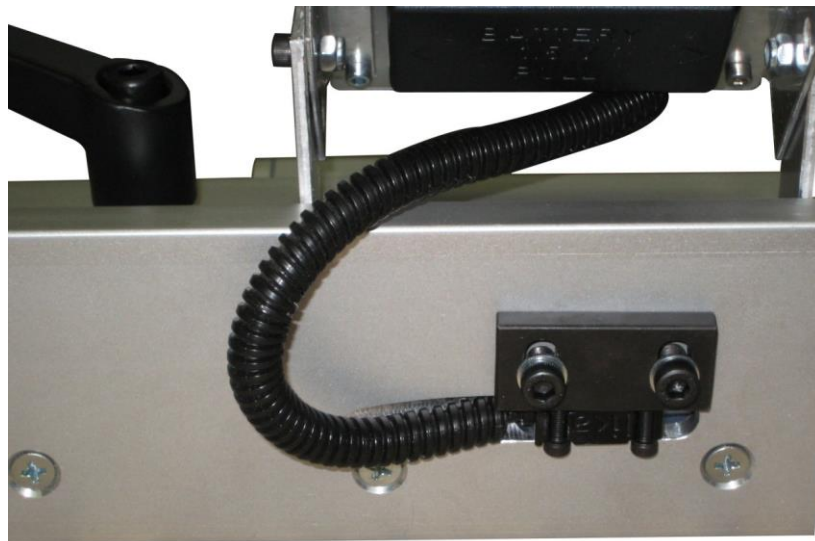
**Use the same procedure for installing the steel cover strip. The cover strip should end at the edge of the tape and use supplied covers to hold the ends of the tape and cover down.**





**Reinstall your carriage with the scale facing the back of the carriage as shown.**

**If the display has trouble reading the scale, you may need to check the gap between the display's encoder and the scale. This gap should be no more than 2mm and can be adjusted by loosening the M3 socket head cap screws that secure the encoder.**







## LD142 Factory Parameters



**To enter the parameters menu:**

1. Hold down “P” until you see “Setup”
2. Press “↑” then press “P” to scroll through
3. Press “\*” to save any parameter changes

### Default factory settings

Unit	1dEc
rES	0.001
dir	uP
F_nn1	Yes
F_rEL	no
F_rSt	Yes
F_rEF	Yes
rEF	000.000
F_oFS	no
rESEt	No rSt



[www.kentuckygauge.com](http://www.kentuckygauge.com)  
427 Bark Cove, Owensboro, KY 42303  
(270) 683-3500 Ex.114 • Fax (270) 683-2500